

## How to Apply

All applications are submitted on the [H<sub>2</sub>LOans](http://www.h2loans.com) website ([www.h2loans.com](http://www.h2loans.com)). To open an [H<sub>2</sub>LOans](http://www.h2loans.com) account, call the I-Bank at 609-219-8601.

Applications are accepted any time of the year. For program application guidance see the [Applicant's Guide](#)

## Eligible Applicants & Projects

### Applicants

- Publicly owned treatment works: (towns, boroughs, municipal utility authorities, counties, regional water authorities, other local government units)
- Private entities through public conduit borrowers.
- Private colleges & universities sponsoring non-source pollution projects

### CW Projects

Waste water	Land Preservation
Storm water	Equipment Purchase
Green Infrastructure	Security Monitoring
Brownfields	Meter Projects
Landfills	Redevelopment Projects

### Additional Information:

NJ I-Bank [January Report](#)

DEP Water Infrastructure Investment Plan ([WIIP](#))

DEP [Intended Use Plan](#)

Follow us on [Face Book](#) and [Linkedln](#)

### Contact us:

Info@h2loans.com  
Phone: 609-219-8601

New Jersey Infrastructure Bank  
3131 Princeton Pike  
Building 4, Suite 216  
Lawrenceville, NJ 08648-2201

NJIB Website: [njib.gov](http://njib.gov)

## SFY2027 Clean Water Program Highlights\*

### Enhanced Assistance for Disadvantaged

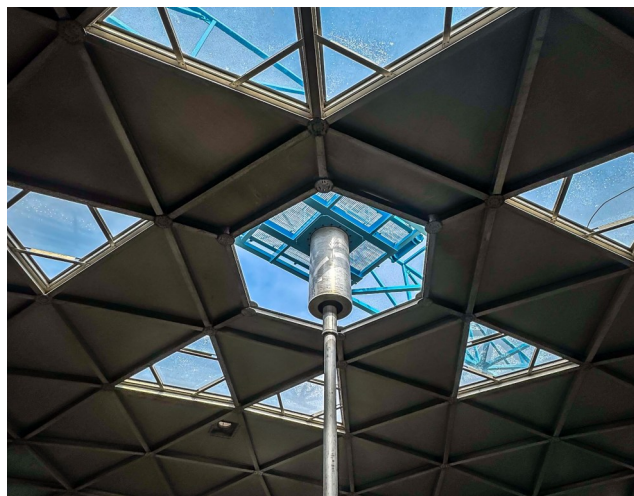
**Communities (DACs)** Applicants meeting the Affordability Criteria are eligible to participate in the CW Technical Assistance Program (NJ-TAP).

- Participating sponsors are now eligible to receive up to \$2M in grants for planning and design activities.
- Participating sponsors will also be offered up to \$2M in PF or the best available funding package for their capital improvement project at the time of loan certification. See the Intended Use Plan link to the left.

### 45-year loan terms for Combined Sewer Overflow (CSO) Projects

The Water Bank is addressing the issue of rising construction costs and delays through innovative financing solutions, including low-cost, short-term construction loans, WIFIA Loan Program utilization, prioritized ranking, lower loan rates for CSO projects, and increased principal forgiveness opportunities. Additionally, up to 45 years extended-term financing for CSO projects and 35 years for WIFIA-financed projects helps ease repayment burdens, ensuring these vital improvements remain within reach for the communities that need them most.

**\*All funding packages are subject to change based on the final IUP.**



## SFY2027 Water Bank CLEAN WATER Program



Enhancing infrastructure is vital to New Jersey's health and economy. To alleviate the significant investment required to sustain and improve the State's aging infrastructure systems, the I-Bank offers low-cost financing for water quality infrastructure projects. The I-Bank's NJEIT Department partners with the NJDEP to jointly administer low cost loans through the NJ Water Bank for projects with water quality benefits. The Water Bank is in turn, comprised of two programs: the Clean Water program and the Drinking Water program.

**NJ I-Bank and NJDEP  
Helping to Improve  
New Jersey's Infrastructure,  
One Project at a Time**

## Clean Water Funding Basics\*

### “Blended Rate”

Long-term funding packages are represented as a blended interest rate consisting of a percentage of the I-Bank’s AAA Market Interest Rate. **(Blended Rate)**. For example, a long-term funding package that consist of a 75% DEP interest-free share and a 25% I-Bank market-rate share is described as a 25% Blended Rate.

### Base CWSRF Rate = 50% Blended Rate

### Tiered Affordability Packages

**AC1 Systems** with an Affordability Score of 69.11 and under receive 100% PF capped at \$3M. Remaining project costs financed at a 25% Blended Rate.

**AC2 Systems** with an Affordability score of 69.12 to 86.19 or meet the Environmental Justice Economic Overburdened Criteria will receive 100% PF capped at \$2M. Remaining project costs to be financed at a 25% Blended Rate.

**The DEP Fee is waived for the PF portion of affordability loans.**

**Enhanced Base Rate:** Sponsors with Affordability Scores of 100 and under are eligible for the Enhanced Base CWSRF Package of 25% Blended Rate.

**\*All funding packages are subject to change based on final Intended Use Plan (IUP).**



## Clean Water Program

### Principal Forgiveness Opportunities (PF)\*

**CSO Abatement (\$30M PF available of which \$7.5M is reserved for Green Infrastructure)** Projects that address combined sewer overflows are eligible to receive PF for up to 50% of allowable costs capped at \$10 million and a 25% Blended Rate for the remainder of project costs up to \$10M. Projects in excess of \$10M will be financed at a 25% Blended Rate.

**CSO Abatement/Affordability (\$30M PF available of which \$7.5M is reserved for Green Infrastructure)** CSO abatement projects in communities that meet the AC1 Affordability criteria are eligible for 100% PF capped at \$8M. CSO abatement projects in communities that meet the AC2 Affordability criteria are eligible for 100% PF capped at \$7M, both designations receive a 25% Blended Rate for remaining project costs.

### Sewer Overflow and Stormwater Reuse Grant (OSG) Program CWSRF Loans (\$4M PF available)

For projects addressing combined sewer overflows, sanitary sewer overflows, and stormwater management, OSG money will pay 80% of costs as a grant and 20% PF up to \$2M. Disadvantaged communities are eligible to receive a grant for 100% of eligible project costs. The DEP Fee is waived for the PF portion of OSG loans.

**Affordability (\$30M PF available)** For sponsors with affordability scores of AC1 or AC2 see the tiered affordability terms at left.

### Water Quality Restoration (\$18M PF available)

Projects that eliminate, prevent, or reduce the presence of harmful algal blooms (HABs) are eligible for PF for up to 50% of allowable costs capped at \$2M per applicant and a 50% Blended Rate for the remaining project costs for up to \$4M of allowable project costs. Project costs over \$4M will receive a 25% Blended Rate. If PF funds are no longer available, projects are financed at a 25% Blended Rate.

### PF Opportunities\* (cont’d):

**Energy and Water Efficiency (\$12M PF available)** Projects that address water and energy efficiency goals and meet the eligibility requirements as defined in the EPA’s Green Project Reserve

Guidance will be eligible to receive PF for up to 50% of allowable project costs capped at \$2M, and a 50% Blended Rate for the remainder of project costs up to \$4M. Allowable project costs over \$4M will receive a 25% Blended Rate. If PF funds are no longer available, projects are financed at a 25% Blended Rate.

### Emerging Contaminants (\$34M PF available)

Emerging contaminants are substances or microorganisms, natural or manufactured, that appear in the environment and may pose new or renewed risks to health, aquatic life, or ecosystems. They include chemicals from personal care products, pharmaceuticals, industrial processes, pesticides, and microplastics. Projects that address emerging contaminants are eligible for up to \$10M in PF funding per applicant for 100% of allowable project costs. Project costs exceeding \$10M will receive a 25% Blended Rate.

### Stormwater Resilience (\$20M PF available)

For the first \$10 million in project costs, projects that improve stormwater infrastructure and strengthen community resilience may receive up to 50% principal forgiveness (capped at \$5 million per applicant), with the remaining balance financed at a 25% blended interest rate. Many of these projects use green infrastructure and nature-based solutions, particularly in overburdened communities. If principal forgiveness funds are no longer available, projects may still receive loan financing at a 25% blended interest rate.

